



Xilo, înălțimea 1744 mm, lățime 506 mm, Alb Standard

Caracteristici Tehnice

calorifer port prosop din oțel cu elemente orizontale din profile plate
50x10 mm

colectoare lateral cu secțiune circulară și diametrul de 30 mm

filetarea extremității colectorului de 1/2" Gas drept

presiunea maximă admisă de 4 bar

temperatura maximă admisă de 95°C

Standard equipment

4 chela pentru instalare
aerisitor

Certifications



Plus



Date tehnice

Model	Depth (mm)	Height (mm)	Width (mm)	Conn. C. (mm)	Weight (kg)	Capacity (lt)	$\Delta t=60^{\circ}\text{C}$ (Watt)	$\Delta t=50^{\circ}\text{C}$ (Watt)	$\Delta t=40^{\circ}\text{C}$ (Watt)	$\Delta t=30^{\circ}\text{C}$ (Watt)	$\Delta t=20^{\circ}\text{C}$ (Watt)	Exponent	mixed oper. (Watt)
792 11 țevi 2 spații	38,0	792	456	406	6,40	2,70	469,0	377,0	288,0	204,0	126,0	1,200	400
792 11 țevi 2 spații	38,0	792	506	456	7,00	2,90	513,0	412,0	315,0	223,0	137,0	1,199	400
792 11 țevi 2 spații	38,0	792	556	506	7,50	3,10	557,0	447,0	342,0	243,0	149,0	1,198	400
792 11 țevi 2 spații	38,0	792	606	556	8,10	3,30	600,0	482,0	369,0	262,0	161,0	1,197	400
792 11 țevi 2 spații	38,0	792	756	706	9,70	3,80	731,0	588,0	450,0	319,0	197,0	1,195	400
1156 16 țevi 3 spații	38,0	1156	456	406	9,30	3,90	629,0	507,0	390,0	278,0	172,0	1,180	400
1156 16 țevi 3 spații	38,0	1156	506	456	10,10	4,20	691,0	558,0	429,0	305,0	189,0	1,178	400
1156 16 țevi 3 spații	38,0	1156	556	506	10,90	4,50	753,0	608,0	467,0	333,0	207,0	1,177	400
1156 16 țevi 3 spații	38,0	1156	606	556	11,70	4,80	815,0	658,0	506,0	361,0	224,0	1,175	700
1156 16 țevi 3 spații	38,0	1156	756	706	14,10	5,60	1.000,0	808,0	622,0	444,0	276,0	1,170	700
1520 21 țevi 4 spații	38,0	1520	456	406	12,20	5,20	815,0	654,0	498,0	351,0	215,0	1,214	700
1520 21 țevi 4 spații	38,0	1520	506	456	13,30	5,50	895,0	718,0	549,0	388,0	238,0	1,205	700
1520 21 țevi 4 spații	38,0	1520	556	506	14,30	5,90	974,0	783,0	600,0	425,0	262,0	1,195	700
1520 21 țevi 4 spații	38,0	1520	606	556	15,40	6,30	1.053,0	848,0	651,0	463,0	286,0	1,186	700
1520 21 țevi 4 spații	38,0	1520	756	706	18,50	7,40	1.288,0	1.043,0	805,0	577,0	361,0	1,157	1000
1744 25 țevi 4 spații	38,0	1744	456	406	14,40	6,10	950,0	766,0	588,0	418,0	258,0	1,185	700

1744 25 țevi 4 spații	38,0	1744	506	456	15,70	6,50	1.041,0	839,0	644,0	459,0	284,0	1,182	700
1744 25 țevi 4 spații	38,0	1744	556	506	16,90	6,90	1.131,0	912,0	701,0	500,0	310,0	1,179	700
1744 25 țevi 4 spații	38,0	1744	606	556	18,20	7,40	1.222,0	986,0	758,0	541,0	336,0	1,176	1000
1744 25 țevi 4 spații	38,0	1744	756	706	21,90	8,70	1.492,0	1.206,0	930,0	665,0	414,0	1,167	1000

Grație prestațiilor ridicate ale corpurilor încălzitoare Irsap Xilo, se consideră ideale pentru proiectarea la joasă temperatură un Δt la 30°C

Pentru $\Delta t \neq 60^\circ\text{C}$ utilizați formula: $Q=Q_n (\Delta t / 60)^n$

Standard equipment

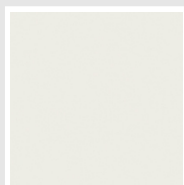
- 4 chela pentru instalare
- aerisitor

Packing

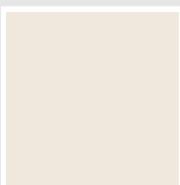
Atenția pe care Irsap o rezervă fiecărui calorifer se manifestă și în grija pentru ambalaj. Fiecare produs este protejat de un material antișoc care previne zgârieturile și deteriorările accidentale pe parcursul transportului sau a manipulării pe șantier. Toate ambalajele trebuie colectate și reciclate conform legislației în vigoare.

Colori e finisaje

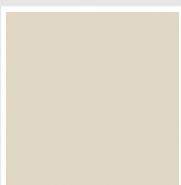
CLASSIC



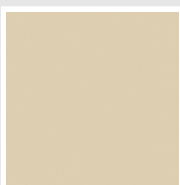
Bianco Edelweiss
Opaco
Cod. 34



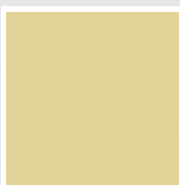
Bianco Whisper
Peach
Cod. 36



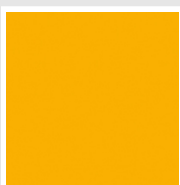
Jasmin Opaco
Cod. 35



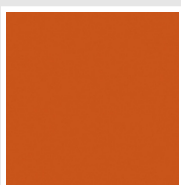
Beige Naturale
Cod. 38



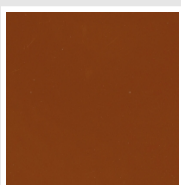
Beige Cream
Cod. 26



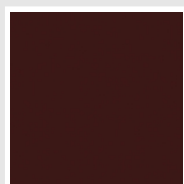
Giallo Melone - RAL
1028
Cod. E7



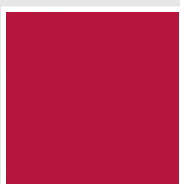
Arancio - RAL 2004
Cod. 17



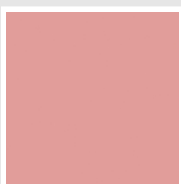
Marrone Ruggine -
RAL 8004
Cod. E1



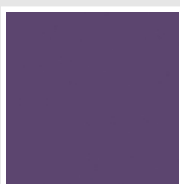
Vinaccia - RAL 3005
Cod. H9



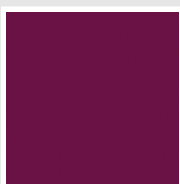
Rosso Fragola - RAL
3018
Cod. Y3



Rosa - RAL 3015
Cod. R2



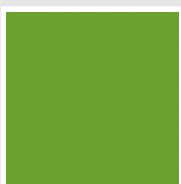
Lilla Bluastro - RAL
4005
Cod. R3



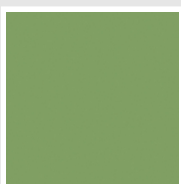
Porpora Traffico -
RAL 4006
Cod. R6



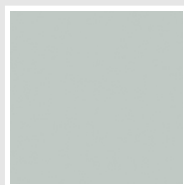
Verde Bosco - RAL
6005
Cod. 19



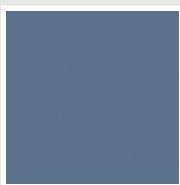
Verde Erba - RAL
6018
Cod. N3



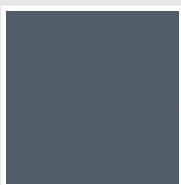
Verde Salvia - RAL
6021
Cod. E6



Verde Greenwich
Cod. 28



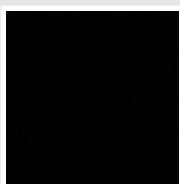
Blu Pastello - RAL
5024
Cod. G7



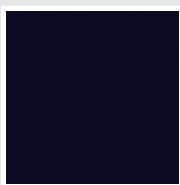
Blu Colomba - RAL
5014
Cod. G9



Blu Hewi
Cod. 11

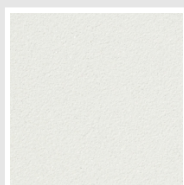


Nero - RAL 9005
Cod. 10

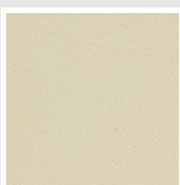


Deep Blue
Cod. 2F

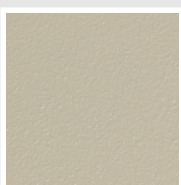
SPECIAL



Bianco Perla
Cod. 16



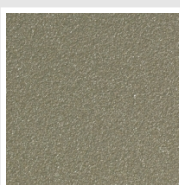
Quartz 1
Cod. 1C



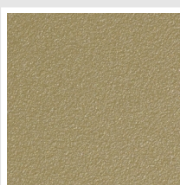
Sablé
Cod. Y4



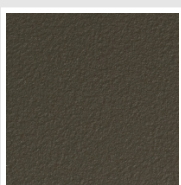
Quartz 2
Cod. 2C



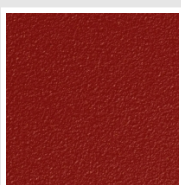
Sunstone
Cod. 2D



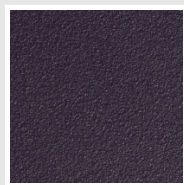
Petra
Cod. 3D



Bruno Tabacco
Cod. 1B



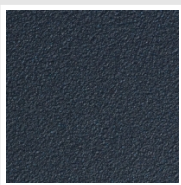
Flame Red
Cod. 7D



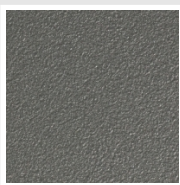
Purple Blue
Cod. 1D



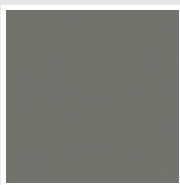
Azurite
Cod. 6D



Azurite 3
Cod. 6C



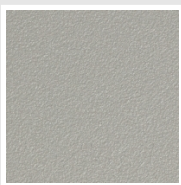
Grigio Medio
Cod. 4D



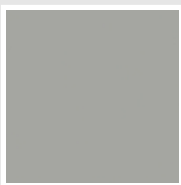
Grigio Titanio
Metallizzato - RAL
9023
Cod. L3



Grigio Silver
Cod. 5D



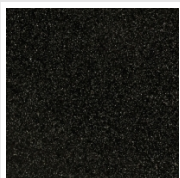
Grigio Perla
Cod. L6



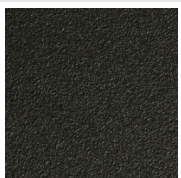
Grigio Alluminio -
RAL 9006
Cod. B4



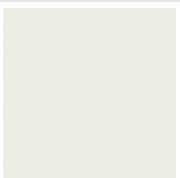
Nero Grafite
Cod. 18



Grigio Quarzo
Cod. 31



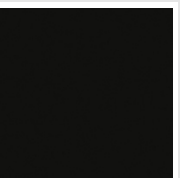
Nero Satinato
Cod. 30



Luxury White
Cod. J7



Bianco Opaco
Cod. J8



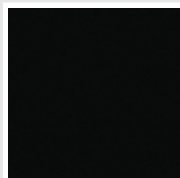
Nero Opaco
Cod. K1



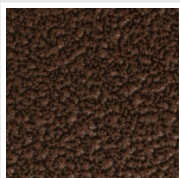
Bronzo
Cod. J9



Grigio Martellato
Cod. 32

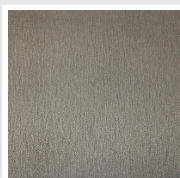


Luxury Black
Cod. J3



Rame Martellato
Cod. J4

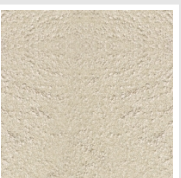
SURFACES



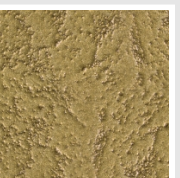
Trattamento Loft
Cod. TR



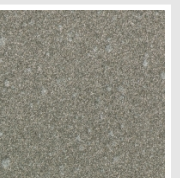
Taftah Argento
Cod. K4



Taftah Platino
Cod. K3



Taftah Oro
Cod. K2



Grey Shadow
Cod. X6

The Colors used in this folder are not considered binding. The different technological painting processes and the materials used for the realization can not have a perfect color match with the delivered product. Irsap company reserves the right to introduce at any time whatever modifications necessary to the improvement of the product.