



Like, înălțimea 1806 mm, lățime 632 mm, Brun Tabac

Caracteristici Tehnice

calorifer port prosop din oțel cu elemente orizontale din țeavă ovale
 au diametrul de 12 mm
 colectoare laterale cu secțiune semiovală de 40X23 mm
 filetarea extremității colectorului și racordări centrale (50 mm), primul
 tub inferior 1/2" Gaz dreapta
 presiunea maximă admisă de 4 bar
 temperatura maximă admisă de 95°C

Standard equipment

4 console pentru fixarea pe perete, sudate pe colector, de
 aceeași
 culoare cu caloriferul
 aerisitor

Plus



Date tehnice

Model	Deph (mm)	Height (mm)	Width (mm)	Conn. C. (mm)	Weigh (kg)	Capacity (lt)	$\Delta t=60^{\circ}\text{C}$ (Watt)	$\Delta t=50^{\circ}\text{C}$ (Watt)	$\Delta t=40^{\circ}\text{C}$ (Watt)	$\Delta t=30^{\circ}\text{C}$ (Watt)	$\Delta t=20^{\circ}\text{C}$ (Watt)	Exponent
01												
882 31 țevi 1 spațiu	35,0	882	482	406	6,90	2,80	547,0	435,0	329,0	229,0	138,0	1,254
882 31 țevi 1 spațiu	35,0	882	532	456	7,50	3,00	605,0	482,0	365,0	255,0	154,0	1,245
882 31 țevi 1 spațiu	35,0	882	632	556	8,70	3,30	718,0	574,0	436,0	307,0	186,0	1,228
1300 46 țevi 2 spații	35,0	1300	482	406	9,80	3,80	807,0	641,0	484,0	337,0	202,0	1,260
1300 46 țevi 2 spații	35,0	1300	532	456	10,60	4,10	881,0	701,0	530,0	369,0	222,0	1,256
1300 46 țevi 2 spații	35,0	1300	632	556	12,30	4,50	1.030,0	821,0	622,0	434,0	262,0	1,246
1564 54 țevi 3 spații	35,0	1564	482	406	11,40	4,40	973,0	773,0	583,0	406,0	243,0	1,261
1564 54 țevi 3 spații	35,0	1564	532	456	12,40	4,70	1.059,0	842,0	636,0	443,0	266,0	1,257
1564 54 țevi 3 spații	35,0	1564	632	556	14,30	5,20	1.231,0	980,0	742,0	518,0	312,0	1,249
1806 65 țevi 3 spații	35,0	1806	482	406	13,30	5,10	1.081,0	859,0	648,0	451,0	270,0	1,262
1806 65 țevi 3 spații	35,0	1806	532	456	14,50	5,40	1.224,0	973,0	735,0	512,0	307,0	1,259
1806 65 țevi 3 spații	35,0	1806	632	556	16,80	6,00	1.419,0	1.129,0	854,0	595,0	358,0	1,253
05												
882 31 țevi 1 spațiu	35,0	882	482	50	6,90	2,80	547,0	435,0	329,0	229,0	138,0	1,254
882 31 țevi 1 spațiu	35,0	882	532	50	7,50	3,00	605,0	482,0	365,0	255,0	154,0	1,245
882 31 țevi 1 spațiu	35,0	882	632	50	8,70	3,30	718,0	574,0	436,0	307,0	186,0	1,228

1300 46 țevi 2 spații	35,0	1300	482	50	9,80	3,80	807,0	641,0	484,0	337,0	202,0	1,260
1300 46 țevi 2 spații	35,0	1300	532	50	10,60	4,10	881,0	701,0	530,0	369,0	222,0	1,256
1300 46 țevi 2 spații	35,0	1300	632	50	12,30	4,50	1.030,0	821,0	622,0	434,0	262,0	1,246
1564 54 țevi 3 spații	35,0	1564	482	50	11,40	4,40	973,0	773,0	583,0	406,0	243,0	1,261
1564 54 țevi 3 spații	35,0	1564	532	50	12,40	4,70	1.059,0	842,0	636,0	443,0	266,0	1,257
1564 54 țevi 3 spații	35,0	1564	632	50	14,30	5,20	1.231,0	980,0	742,0	518,0	312,0	1,249
1806 65 țevi 3 spații	35,0	1806	482	50	13,30	5,10	1.081,0	859,0	648,0	451,0	270,0	1,262
1806 65 țevi 3 spații	35,0	1806	532	50	14,50	5,40	1.224,0	973,0	735,0	512,0	307,0	1,259
1806 65 țevi 3 spații	35,0	1806	632	50	16,80	6,00	1.419,0	1.129,0	854,0	595,0	358,0	1,253

Grație prestațiilor ridicate ale corpurilor încălzitoare Irsap Like, se consideră ideale pentru proiectarea la joasă temperatură un Δt la 30°C

Randamentul este calculat în fază de certificare. Putere calculată cu Δt 60°C. Pentru $\Delta t \neq$ de 60°C utilizați formula: $Q=Q_n (\Delta t / 60)n$

Standard equipment

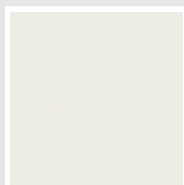
- 4 console pentru fixarea pe perete, sudate pe colector, de aceeași culoare cu caloriferul
- aerisitor

Packing

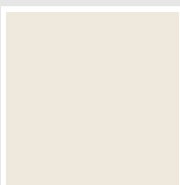
Atenția pe care Irsap o rezervă fiecărui calorifer se manifestă și în grija pentru ambalaj. Fiecare produs este protejat de un material antișoc care previne zgârieturile și deteriorările accidentale pe parcursul transportului sau a manipulării pe șantier. Toate ambalajele trebuie colectate și reciclate conform legislației în vigoare.

Colori e finisaje

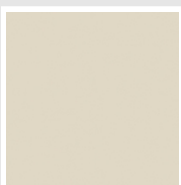
CLASSIC



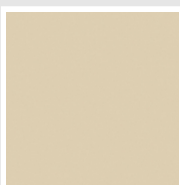
Bianco Edelweiss
Opaco
Cod. 34



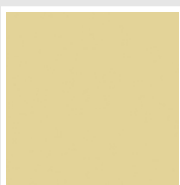
Bianco Whisper
Peach
Cod. 36



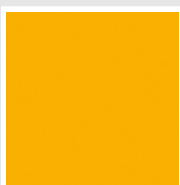
Jasmin Opaco
Cod. 35



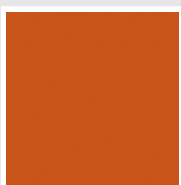
Beige Naturale
Cod. 38



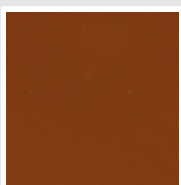
Beige Cream
Cod. 26



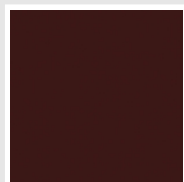
Giallo Melone - RAL
1028
Cod. E7



Arancio - RAL 2004
Cod. 17



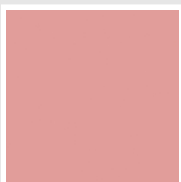
Marrone Ruggine -
RAL 8004
Cod. E1



Vinaccia - RAL 3005
Cod. H9



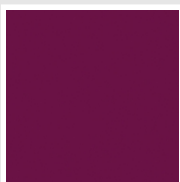
Rosso Fragola - RAL
3018
Cod. Y3



Rosa - RAL 3015
Cod. R2



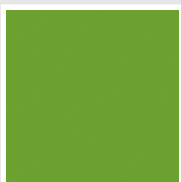
Lilla Bluastro - RAL
4005
Cod. R3



Porpora Traffico -
RAL 4006
Cod. R6



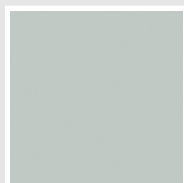
Verde Bosco - RAL
6005
Cod. 19



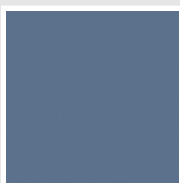
Verde Erba - RAL
6018
Cod. N3



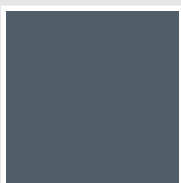
Verde Salvia - RAL
6021
Cod. E6



Verde Greenwich
Cod. 28



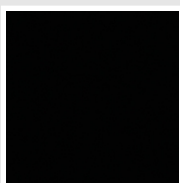
Blu Pastello - RAL
5024
Cod. G7



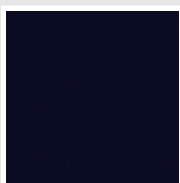
Blu Colomba - RAL
5014
Cod. G9



Blu Hewi
Cod. 11

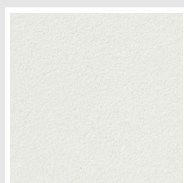


Nero - RAL 9005
Cod. 10

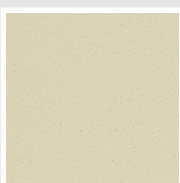


Deep Blue
Cod. 2F

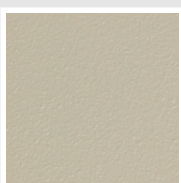
SPECIAL



Bianco Perla
Cod. 16



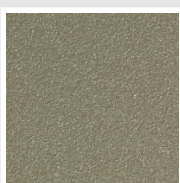
Quartz 1
Cod. 1C



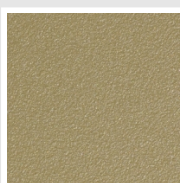
Sablé
Cod. Y4



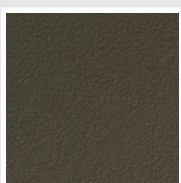
Quartz 2
Cod. 2C



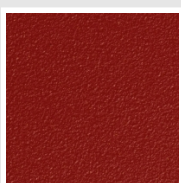
Sunstone
Cod. 2D



Petra
Cod. 3D



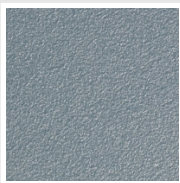
Bruno Tabacco
Cod. 1B



Flame Red
Cod. 7D



Purple Blue
Cod. 1D



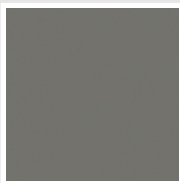
Azurite
Cod. 6D



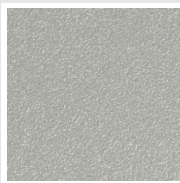
Azurite 3
Cod. 6C



Grigio Medio
Cod. 4D



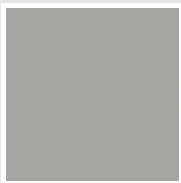
Grigio Titanio
Metallizzato - RAL
9023
Cod. L3



Grigio Silver
Cod. 5D



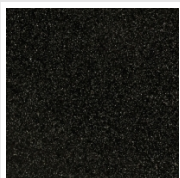
Grigio Perla
Cod. L6



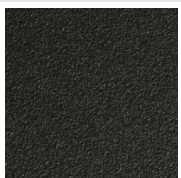
Grigio Alluminio -
RAL 9006
Cod. B4



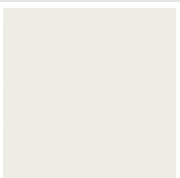
Nero Grafite
Cod. 18



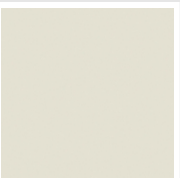
Grigio Quarzo
Cod. 31



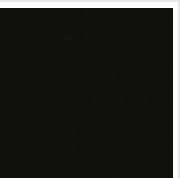
Nero Satinato
Cod. 30



Luxury White
Cod. J7



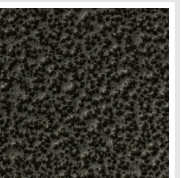
Bianco Opaco
Cod. J8



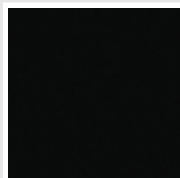
Nero Opaco
Cod. K1



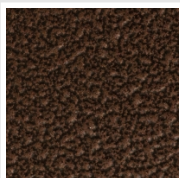
Bronzo
Cod. J9



Grigio Martellato
Cod. 32

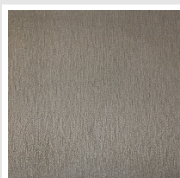


Luxury Black
Cod. J3



Rame Martellato
Cod. J4

SURFACES



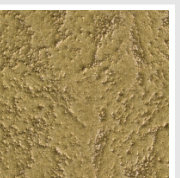
Trattamento Loft
Cod. TR



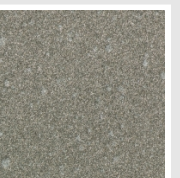
Taftah Argento
Cod. K4



Taftah Platino
Cod. K3



Taftah Oro
Cod. K2



Grey Shadow
Cod. X6

The Colors used in this folder are not considered binding. The different technological painting processes and the materials used for the realization can not have a perfect color match with the delivered product. Irsap company reserves the right to introduce at any time whatever modifications necessary to the improvement of the product.