



Funky Elettrico, înălțimea 1423 mm, lățime 600 mm, , Albastru Hewi

Caracteristici Tehnice

țevi din oțel Ø 23 mm

colectoare din oțel Ø 30 mm

cu lichid termovector inclus

lățime cablului electric: 1.200 mm, dopul Schuko

Standard equipment

4 console pentru fixarea pe perete, de aceeași culoare cu caloriferul

telecomandă Wireless

Certifications



Plus



Date tehnice

Model	Deph (mm)	Height (mm)	Width (mm)	Conn. C. (mm)	Weigth (kg)	Electric Power (Watt)
DX						
907 17 țevi 2 spații	62,0	907	500	50	12,50	400
1423 27 țevi 3 spații	62,0	1423	500	50	19,40	500
1423 27 țevi 3 spații	62,0	1423	600	50	22,20	750
1810 34 țevi 4 spații	62,0	1810	600	50	27,90	1000
SX						
907 17 țevi 2 spații	62,0	907	500	50	12,50	400
1423 27 țevi 3 spații	62,0	1423	500	50	19,40	500
1423 27 țevi 3 spații	62,0	1423	600	50	22,20	750
1810 34 țevi 4 spații	62,0	1810	600	50	27,90	1000

Caloriferul se livrează cu rezistența montată întotdeauna în partea dreaptă.

Standard equipment

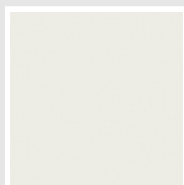
- 4 console pentru fixarea pe perete, de aceeași culoare cu caloriferul
- telecomandă Wireless

Packing

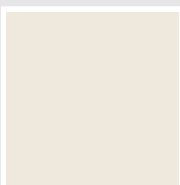
Atenția pe care Irsap o rezervă fiecărui calorifer se manifestă și în grija pentru ambalaj. Fiecare produs este protejat de un material antișoc care previne zgârieturile și deteriorările accidentale pe parcursul transportului sau a manipulării pe șantier. Toate ambalajele trebuie colectate și reciclate conform legislației în vigoare.

Colori e finisaje

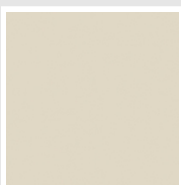
CLASSIC



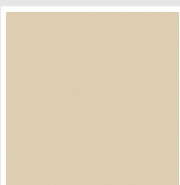
Bianco Edelweiss
Opaco
Cod. 34



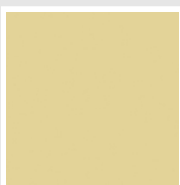
Bianco Whisper
Peach
Cod. 36



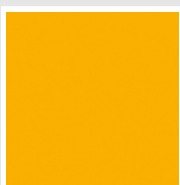
Jasmin Opaco
Cod. 35



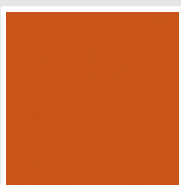
Beige Naturale
Cod. 38



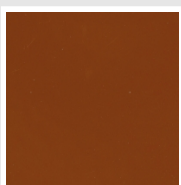
Beige Cream
Cod. 26



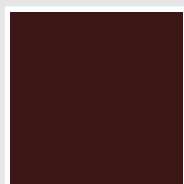
Giallo Melone - RAL
1028
Cod. E7



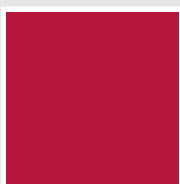
Arancio - RAL 2004
Cod. 17



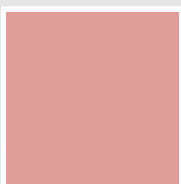
Marrone Ruggine -
RAL 8004
Cod. E1



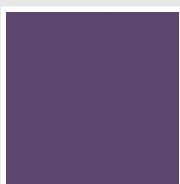
Vinaccia - RAL 3005
Cod. H9



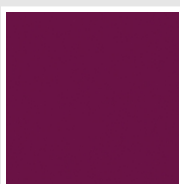
Rosso Fragola - RAL
3018
Cod. Y3



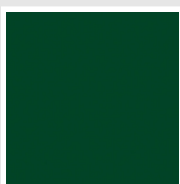
Rosa - RAL 3015
Cod. R2



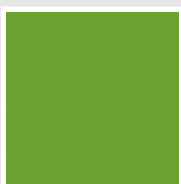
Lilla Bluastro - RAL
4005
Cod. R3



Porpora Traffico -
RAL 4006
Cod. R6



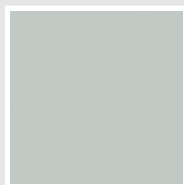
Verde Bosco - RAL
6005
Cod. 19



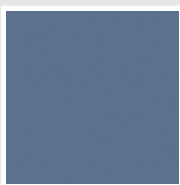
Verde Erba - RAL
6018
Cod. N3



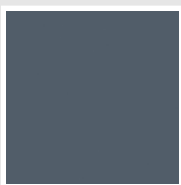
Verde Salvia - RAL
6021
Cod. E6



Verde Greenwich
Cod. 28



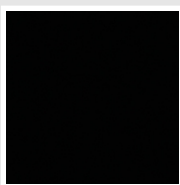
Blu Pastello - RAL
5024
Cod. G7



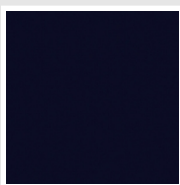
Blu Colomba - RAL
5014
Cod. G9



Blu Hewi
Cod. 11

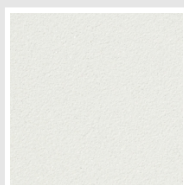


Nero - RAL 9005
Cod. 10

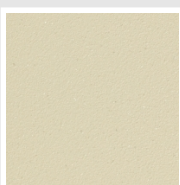


Deep Blue
Cod. 2F

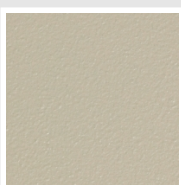
SPECIAL



Bianco Perla
Cod. 16



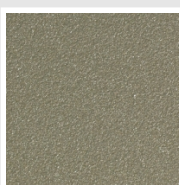
Quartz 1
Cod. 1C



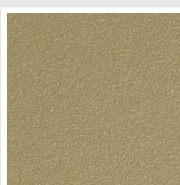
Sablé
Cod. Y4



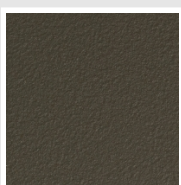
Quartz 2
Cod. 2C



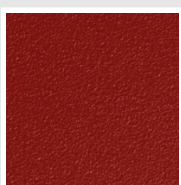
Sunstone
Cod. 2D



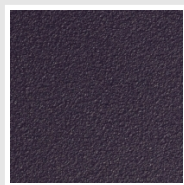
Petra
Cod. 3D



Bruno Tabacco
Cod. 1B



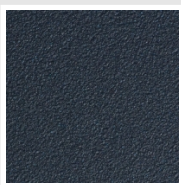
Flame Red
Cod. 7D



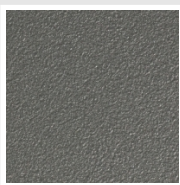
Purple Blue
Cod. 1D



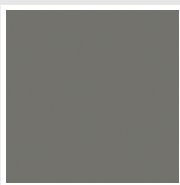
Azurite
Cod. 6D



Azurite 3
Cod. 6C



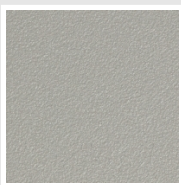
Grigio Medio
Cod. 4D



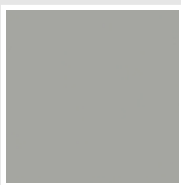
Grigio Titanio
Metallizzato - RAL
9023
Cod. L3



Grigio Silver
Cod. 5D



Grigio Perla
Cod. L6



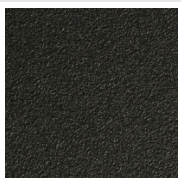
Grigio Alluminio -
RAL 9006
Cod. B4



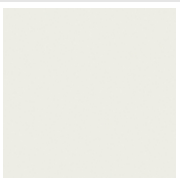
Nero Grafite
Cod. 18



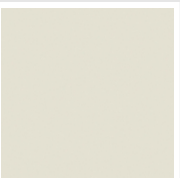
Grigio Quarzo
Cod. 31



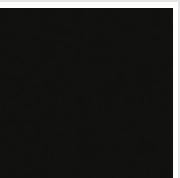
Nero Satinato
Cod. 30



Luxury White
Cod. J7



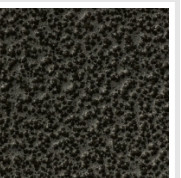
Bianco Opaco
Cod. J8



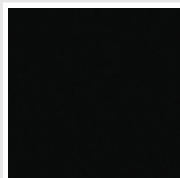
Nero Opaco
Cod. K1



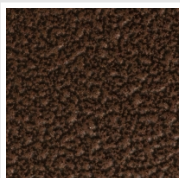
Bronzo
Cod. J9



Grigio Martellato
Cod. 32

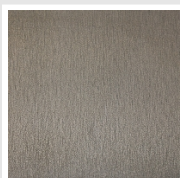


Luxury Black
Cod. J3



Rame Martellato
Cod. J4

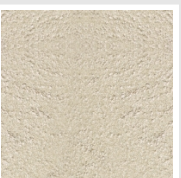
SURFACES



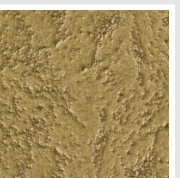
Trattamento Loft
Cod. TR



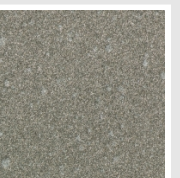
Taftah Argento
Cod. K4



Taftah Platino
Cod. K3



Taftah Oro
Cod. K2



Grey Shadow
Cod. X6

The Colors used in this folder are not considered binding. The different technological painting processes and the materials used for the realization can not have a perfect color match with the delivered product. Irsap company reserves the right to introduce at any time whatever modifications necessary to the improvement of the product.